

# FSC Filter

FSC Series 3/4" - 6"

## Overview

The inlet air, with liquids and particulate that are potentially harmful to the vacuum pump, enters the highly efficient vacuum filter and is separated by an integrated baffle. The larger particles and liquid drop down to the large capacity lower chamber. The lower chamber has significant liquid/slurry holding capacity. The final stage has a replaceable filter element for particulate that is 99+% efficient before it reaches the vacuum pump.

## Benefits

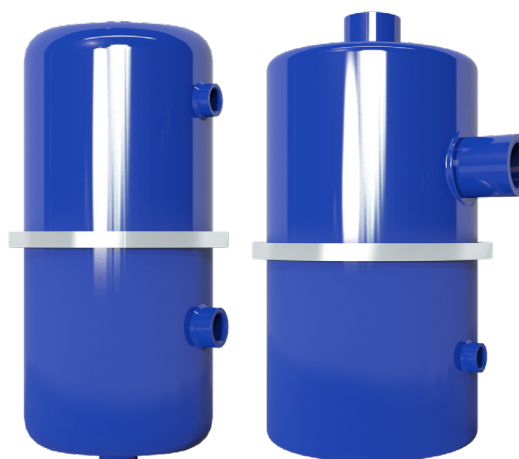
- Simplified vacuum package: 2 functions in 1 (liquid separator & inlet air filter)
- Multistage filtration & separation
- Protects pump from harmful liquids that break down lubricating/sealing oil
- Lower cost than individual separator and filter
- Significant liquid/slurry holding capacity
- Prevents emulsification of oil in oil lubricated systems
- Reduce footprint with compact design

## Features

- Corrosive resistant blue powder coat carbon steel
- Integrated baffle
- Expansion chamber
- 1/4" inlet/outlet taps (select models)
- 1" BSPP drain and sight port

## Technical Specifications

- Vacuum Rating: medium vacuum service\*
- Filter change out differential: 37-50 mbar over initial  $\Delta P$
- Polyester: 99%+ particulate removal efficiency to 5 micron

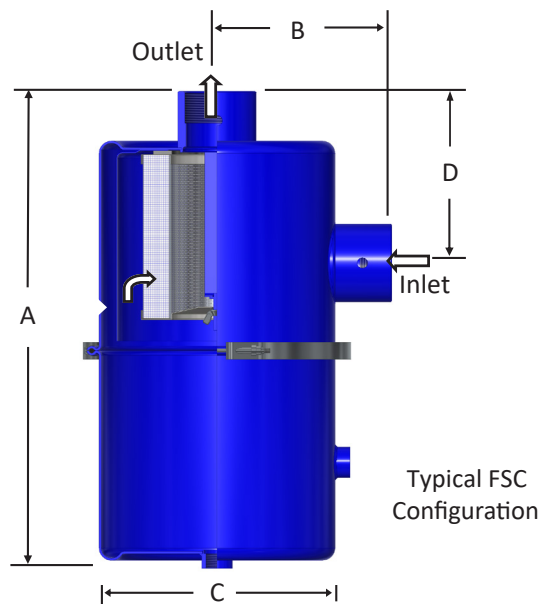


**Threaded Outlet Assembly**



**Flange Outlet Assembly**

# FSC Series 3/4" - 6"



Assembly m <sup>3</sup> /hr Rating	Inlet/Outlet		Assembly Part Number	Dimensions - mm				Suggested Service ht. mm	Approx. Holding Cap. (liter)	Replacement Element Part No.	Element m <sup>3</sup> /hr Rating
	Size	Type		A	B	C	D				
105	3/4"	NPSC	007205	451	112	195	84	121	5.7	007948	170
145	1"	BSPP	007944	455	117	195	89	121	5.7	007948	170
145	1 1/4"	BSPP	007729	455	117	195	89	121	5.7	007948	170
170	1 1/2"	BSPP	007945	455	118	195	90	121	5.7	007948	170
230	2"	BSPP	005594	564	171	305	168	216	9.5	005167	935
335	2 1/2"	BSPP	007946	618	226	305	222	216	9.5	005167	935
510	3"	BSPP	007244	618	226	305	222	216	9.5	005167	935
885	DN100	FLG	005311	594	292	406	203	244	17	006501	1870
1415	DN150	FLG	007947	1032	305	406	229	244	40	006501	1870

## Options



ATEX Available

- PED, ASME rated vessels
- Stainless steel construction & nonstandard finishes
- Nonstandard filter media
- Extended bucket for additional holding capacity
- Preseparator stainless steel demister
- Vacuum gauges
- Drain systems **CE** compliant
- Support legs
- For larger flows, ask about our Knockout Separator Series

\*See Vacuum Filter Technical Data for sizing guidelines and service data.

## Applications & Equipment

- Industrial & Severe Duty
- Vacuum Pumps & Systems: Roots, Rotary Vane, Screw, Piston
- Vacuum Packaging Equipment
- Vacuum Furnace
- Blowers: Side Channel & P.D.
- Vacuum Lifters
- Intake Suction Filters
- Food Industry
- Woodworking/Routers
- Ash Handling
- Printing Industry
- Medical/Hospital
- Remote Installations for Piston & Screw Compressors
- Paper Processing
- Waste Water Aeration
- Cement Processing
- Bag House Systems
- Vacuum Vent Breathers
- Chemical Processing
- Factory Automation Equipment
- Leak Detection Systems

ST4823.00

24/02/2020